

Fusíveis Classe RK1 de 1 - 600A, 600 / 250VCA

Cap. de rupt. 200KA - UL / CSA - Standard

Class RK1 Fuses 600 A / 600 or 250 VAC

Interrupting rating 200KA - UL / CSA Standard



- alta cap. de ruptura / high breaking capacity
- baixa perda / low power dissipation
- limitador de corrente / high current limiting
- terminais prateado / silver plated contacts
- baixa voltagem de arco / low switching voltage
- elemento de prata / silver element design.

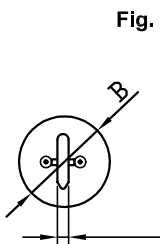


Fig. 2

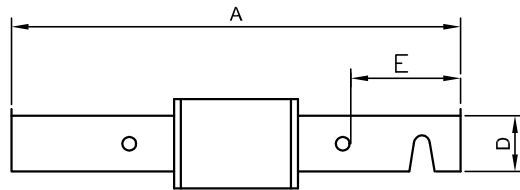


Fig. 1

Dimensões / Dimensions 250V

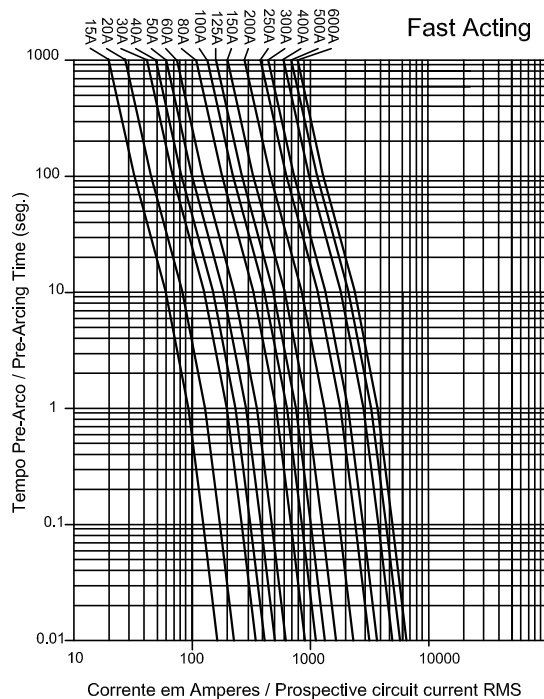
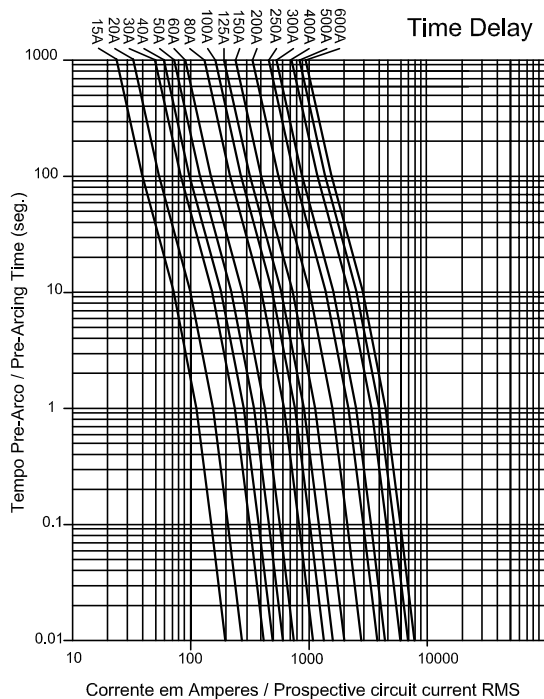
(mm in parentheses)

Dimensões / Dimensions 600V

AMP.	FIG.	A	B	C	D	E
1 - 30	1	2" (51)	9/16" (14)	----	----	----
35 - 60	1	3" (76)	13/16" (21)	----	----	----
70 - 100	2	5-7/8" (149)	1-1/16" (27)	1/8" (3.2)	3/4" (19)	1" (25.4)
110 - 200	2	7-1/8" (181.2)	1-3/4" (44.5)	3/16" (4.8)	1-1/8" (28.1)	1-3/8" (35.2)
225 - 400	2	8-5/8" (219.0)	2-1/4" (57.2)	1/4" (6.4)	1-5/8" (41.2)	1-7/8" (48.3)
450 - 600	2	10" (264.2)	2-3/4" (70)	1/4" (6.4)	2" (51.2)	2-1/4" (57.1)

AMP.	FIG.	A	B	C	D	E
1 - 30	1	5" (127)	13/16" (21)	----	----	----
35 - 60	1	5-1/2" (139)	1-1/16" (27.1)	----	----	----
70 - 100	2	7-7/8" (200.3)	1-3/16" (30)	1/8" (3.2)	3/4" (19)	1" (25.4)
110 - 200	2	9-5/8" (244.1)	1-3/4" (44.5)	3/16" (4.8)	1-1/8" (28.1)	1-3/8" (35.2)
225 - 400	2	11-5/8" (295.0)	2-1/4" (57.2)	1/4" (6.4)	1-5/8" (41.2)	1-7/8" (48.3)
450 - 600	2	13-3/8" (340.2)	2-3/4" (70)	1/4" (6.4)	2" (51.2)	2-1/4" (57.1)

Tempo Corrente / Time - Current Curve



Fusíveis Classe RK5 de 1 - 600A, 600 / 250VCA

Cap. de rupt. 200KA - UL / CSA - Standard

Class RK5 Fuses 600 A / 600 or 250 VAC

Interrupting rating 200KA - UL / CSA Standard



- alta cap. de ruptura / high breaking capacity
- baixa perda / low power dissipation
- limitador de corrente / high current limiting

- terminais prateado / silver plated contacts
- baixa voltagem de arco / low switching voltage
- elemento de prata / silver element design.

Fig. 2

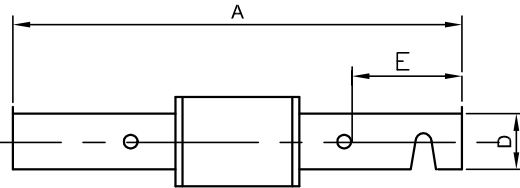
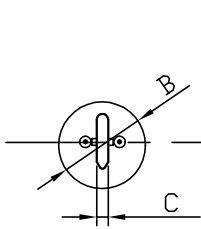
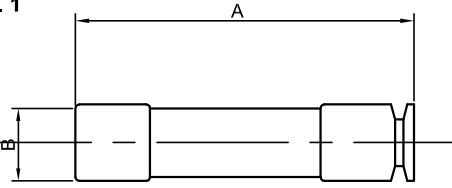


Fig. 1



Dimensões / Dimensions 250V

(mm in parentheses)

Dimensões / Dimensions 600V

AMP.	FIG.	A	B	C	D	E
1 - 30	1	2" (51)	9/16" (14)	----	----	----
35 - 60	1	3" (76)	13/16" (21)	----	----	----
70 - 100	2	5-7/8" (149)	1-1/16" (27)	1/8" (3.2)	3/4" (19)	1" (25.4)
110 - 200	2	7-1/8" (181.2)	1-3/4" (44.5)	3/16" (4.8)	1-1/8" (28.1)	1-3/8" (35.2)
225 - 400	2	8-5/8" (219.0)	2-1/4" (57.2)	1/4" (6.4)	1-5/8" (41.2)	1-7/8" (48.3)
450 - 600	2	10" (264.2)	2-3/4" (70)	1/4" (6.4)	2" (51.2)	2-1/4" (57.1)

AMP.	FIG.	A	B	C	D	E
1 - 30	1	5" (127)	13/16" (21)	----	----	----
35 - 60	1	5-1/2" (139)	1-1/16" (27.1)	----	----	----
70 - 100	2	7-7/8" (200.3)	1-3/16" (30)	1/8" (3.2)	3/4" (19)	1" (25.4)
110 - 200	2	9-5/8" (244.1)	1-3/4" (44.5)	3/16" (4.8)	1-1/8" (28.1)	1-3/8" (35.2)
225 - 400	2	11-5/8" (295.0)	2-1/4" (57.2)	1/4" (6.4)	1-5/8" (41.2)	1-7/8" (48.3)
450 - 600	2	13-3/8" (340.2)	2-3/4" (70)	1/4" (6.4)	2" (51.2)	2-1/4" (57.1)

Tempo Corrente / Time - Current Curve

